

Room 1-11K,jindi mingjin ,Yu Heng Road,FuTian District,ShenZhen,PRC

Tel: 0755 - 8354 6778 Fax: 0755 - 8354 6776

[Http://www.xxkg.com](http://www.xxkg.com)

Technical Data Sheet

Photoelectric Liquid-level Sensor

FS-IR32D

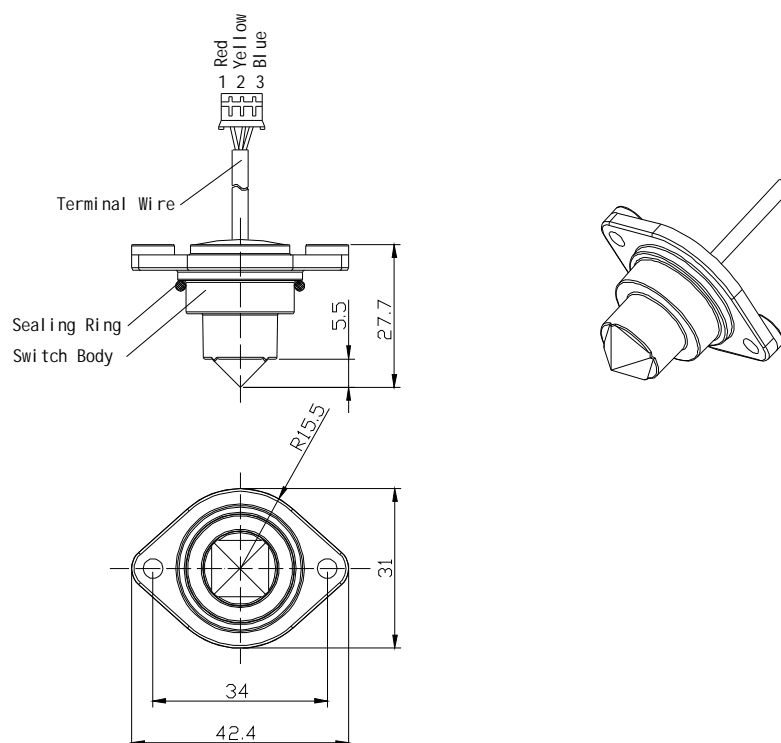
Characteristics

- 1 No mechanical moving components and with high reliability
- 1 Small in size and low in cost
- 1 High liquid level control precision and can be installed from any direction
- 1 Satisfying the requirements in Safety Standards
- 1 The sensor itself satisfies RoHS requirements

Applications

- 1 Electrical appliances and equipments etc. requiring liquid-level control

Dimensions



- Notes:**
1. The unit for each dimension is mm.
 2. The tolerance for unindicted dimensions is ± 0.20 mm.

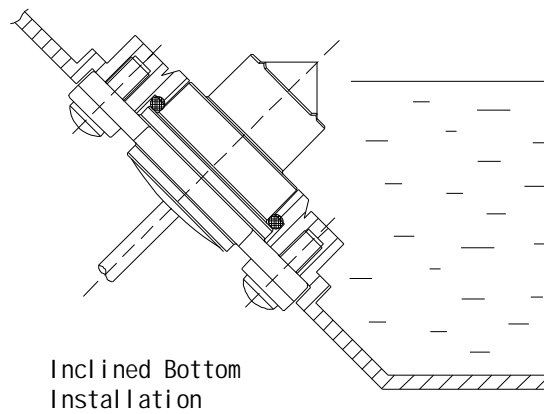
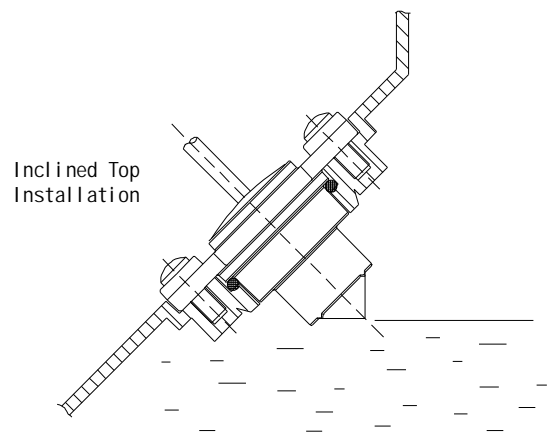
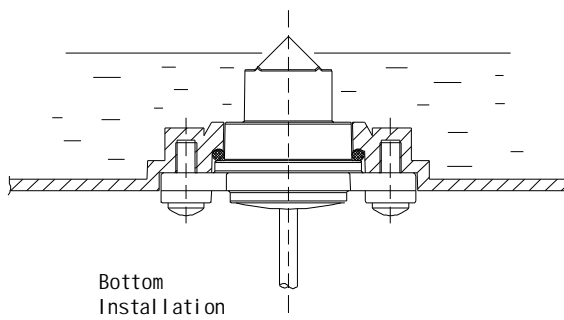
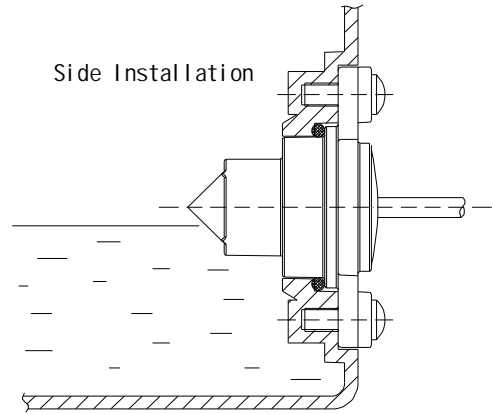
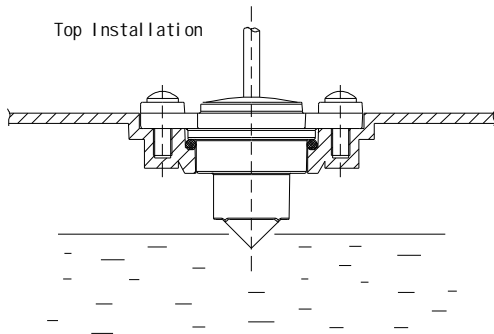
Technical Data Sheet

Photoelectric Liquid-level Sensor

FS-IR32D

Installation & Liquid-level Control

Typical installation modes

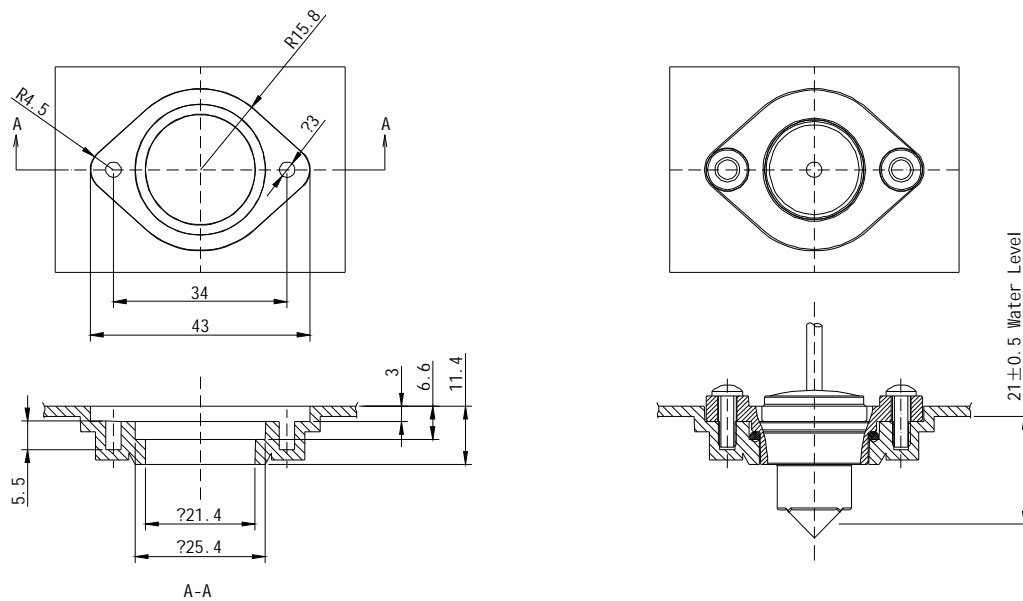


Technical Data Sheet

Photoelectric Liquid-level Sensor

FS-IR32D

Dimensions of bottom installation



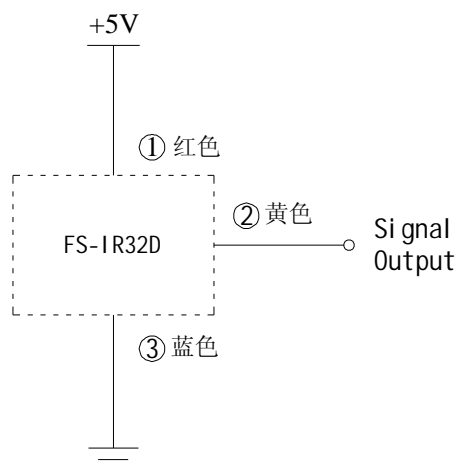
Note: 1. The unit for each dimension is mm.

2. The tolerance for unindicted dimensions is ± 0.20 mm.

3. According to this drawing, the residual water level is to be controlled within 2.8 ± 0.5 mm.

Application & Detection

Install the liquid-level sensor according to one of the typical modes mentioned above, and connect it according to the following circuit; the signal end will output a level signal corresponding to the water level, In case of liquid level above the critical liquid level and submerging the sensor body, the signal output is in low voltage; In case of liquid level below the critical liquid level and exposing the sensor body, the signal output is in high voltage. Specific parameters refer to the following table.



DC 5V application typical circuit

Technical Data Sheet

Photoelectric Liquid-level Sensor

FS-IR32D

Working Parameters (Ta=25°C)

Liquid level	Output voltage of signal Output (V)	True value	Total current (mA)	power dissipation (mW)
Above critical liquid level	< 0.1	0	< 15	< 75
Below critical liquid level	> 4.9	1	< 15	< 75

Note:

Please clean the sensor body when it is very dirt. Do not hurt the surface of it when cleaning.

Limit Parameters (Ta=25°C)

Parameter	Symbol	Specification
Working temperature	T _{opr}	-25°C-120°C (Head)
Storage temperature	T _{stg}	-40°C-85°C
Life	T	50,000 h

Packaging Specification

20 sensors for each bag; and 50 bags for each container.
